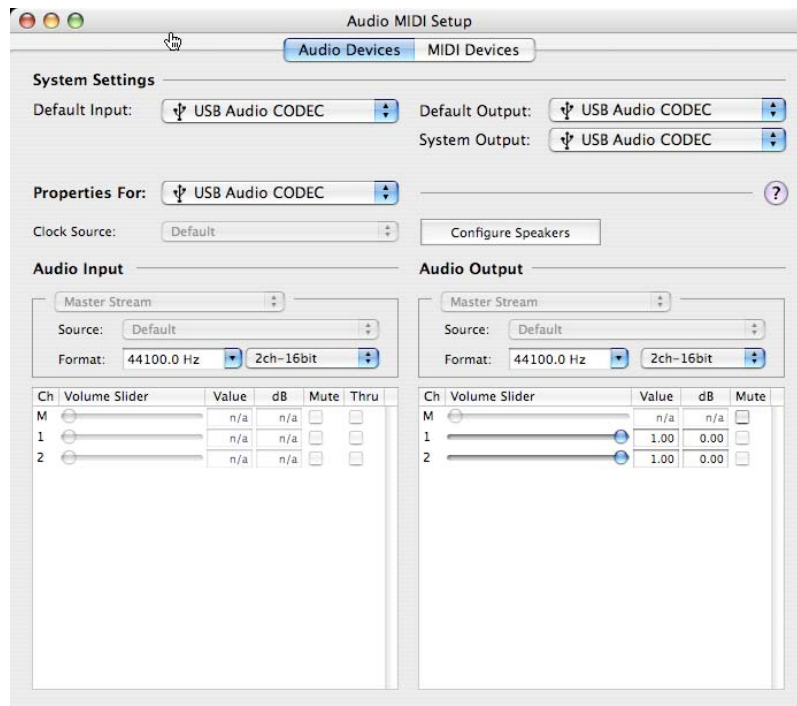
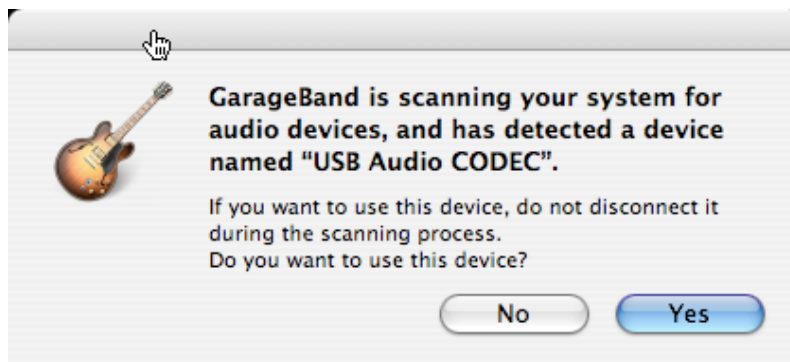


ZED 14 GARAGE BAND SETUP SCREEN SHOTS



This is how the ZED14 should appear in the Mac's Audio/MIDI Setup, Audio Devices dialogue.

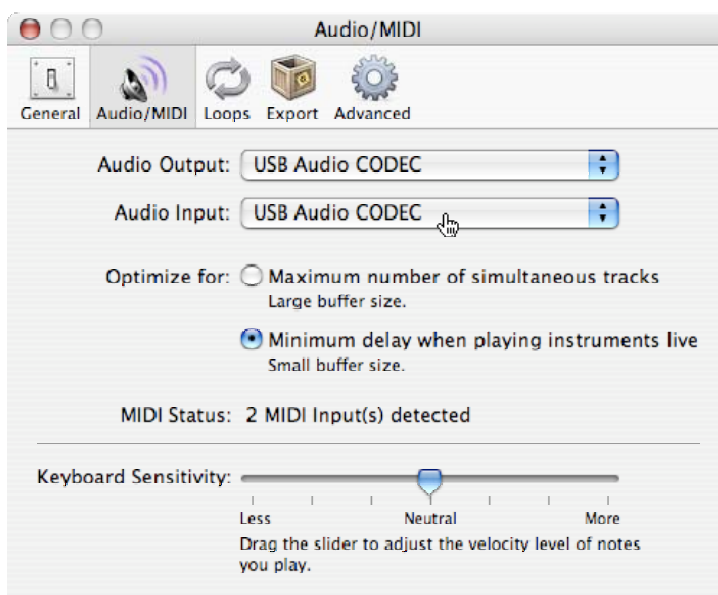
The input is not adjustable here, as the Mac recognises the ZED as an external device (with it's own level adjustment control).



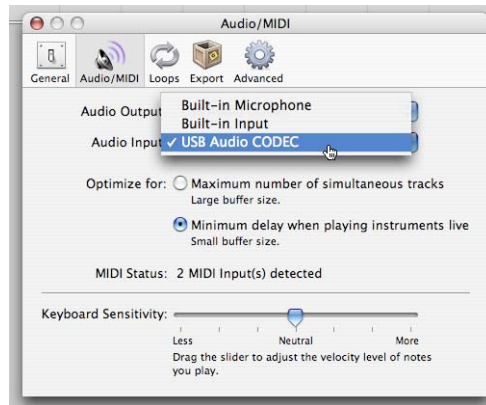
If the ZED is connected to the Mac *after* launching Garage Band, this message should appear, indicating that the programme recognises an external audio device has been connected - and prompting the user to allow the program to assign the ZED as the main I/O device.



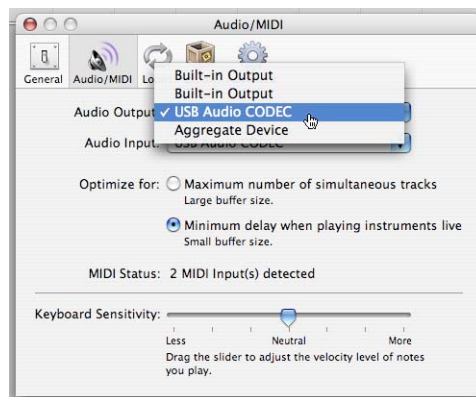
If the ZED is powered on and connected, and has been correctly assigned as the I/O audio device for Garage Band, this message will appear in the program if the ZED becomes disconnected, or is powered off.



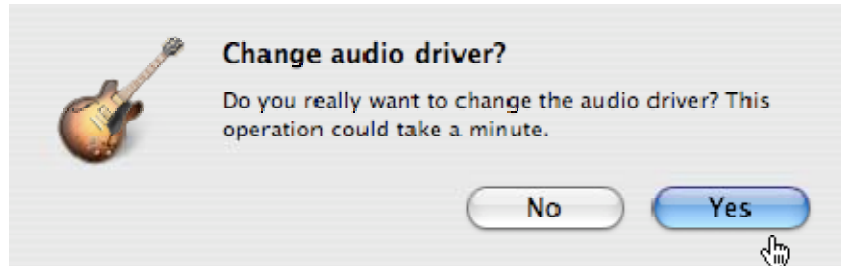
This is how Garage Band's Audio/MIDI preferences should appear if the ZED is properly connected and assigned as the I/O audio device.



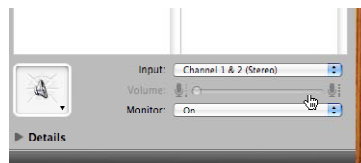
Select **USB Audio CODEC** as the input device from the Audio Input menu options in; Garage Band > Preferences > Audio/MIDI



Select **USB Audio CODEC** as the output device from the Audio Output menu options in; Garage Band > Preferences > Audio/MIDI



This prompt will appear if another device (or the Built-In I/O connections) has been previously selected.



This is how the Track Info dialogue should appear with the ZED properly selected (with no option to alter input volume level)



With audio sent from the ZED14, Garage Band's prefs set as above and a record enabled, audio track selected, the incoming audio signal should be visible at the channel's meter. Input gain can be adjusted here if needed.